

LOOP POWERED LCD DIGITAL PANEL METERS - EPIC SERIES

3 1/2 Digit LCD Display with Loop Powered Adder Board



Amber Negative



Red Negative



Green Negative

Bezel Mount



No Backlight

Features:

- Low-cost, high-performance replacement for many OEM DPMs
- Optional Red, Green or Amber backlighting
- Snap-in bezel mount eliminates mounting hardware
- Resistant to RF and EMI
- 3 1/2 digits with high-contrast LCD Display
- 4- 20 mA loop powered input
- User selectable, displayed engineering units

Specifications:

Display:	
Digits:	3 1/2 digits (±19999 counts)
Type:	0.45" (11.4 mm) 7 segment LCD
Backlighting**:	Optional Red Negative (red numbers/black background) Optional Green Negative (green numbers/black background) Optional Amber Negative (amber numbers/black background)
Polarity:	Automatic, "+" displayed
Annunciators:	°F, °C, PSI, %, user selectable
Decimal Points:	3 position, user selectable
Overload:	Three lower order digits blank for inputs >1999
Inputs:	
Ranges:	4-20mA DC
Configuration:	Bipolar Differential
Impedance*:	300 Ω nominal
Performance:	
Accuracy:	±(0.1% fs + 2 count)
Conversion Rate:	3 per second
Normal Mode Rejection:	>30 db @ 60 Hz
Common Mode Range:	±1V DC max
Common Mode Rej.:	>86 dB
Adjustments:	Span (gain) and Zero (offset)
Warmup:	10 minutes typical
Temperature Coeff.:	± 100 ppm per °C typical
Environment:	
Operating Range:	0 to 50 °C
Storage Range:	-20 to 70 °C
Power Supply:	
	Powered by the Milliamp Control Loop
Optional Backlight:	24V DC at 35 mA typical
Mounting:	
	Snap-in Bezel mount
Connection:	
	2 screw terminal (4 with backlight)

*Impedance is rated at 24 Vdc and 20mA. Exercise caution to avoid too much impedance in the current loop. Most transmitters are rated 500 to 750Ω.

**Negative backlighting is lighted numerals.
Positive backlighting is lighted background.

Ordering Information:

Loop Powered LCD DPM Part Numbering

Backlight Type:

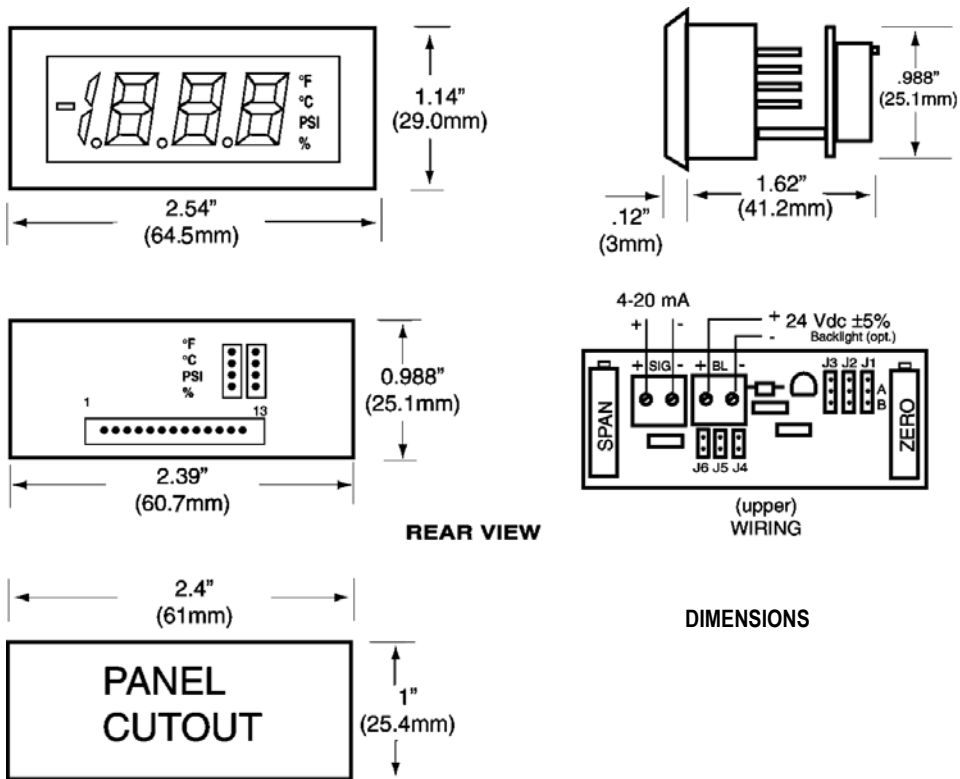
DK191 = No Backlight
DK192 = Amber Negative
DK193 = Green Negative
DK194 = Red Negative

PW2-24Regulated 120V AC to 24V DC Adaptor



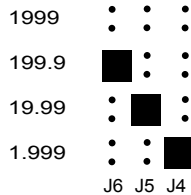
C-TON Industries • PO Box 10129 • Bedford, NH, 03110 • USA
03110-0129

Dimensions



JUMPER SELECTION AND WIRING

1. DECIMAL SELECTION:



2. J1, J2, J3 SELECTION:

- IF:** OFFSET (ZERO) IS \square 0 **or**
 OFFSET (ZERO) > 0 **and** GAIN (SPAN) + OFFSET (ZERO) \square 5
- IF:** OFFSET (ZERO) > 0 **and** GAIN (SPAN) + OFFSET (ZERO) < 5

